

FACILITIES+ INFRASTRUCTURE

DIRECTORY



October 23-26, 2022
McCormick Place
Chicago, Illinois USA

A resource highlighting suppliers who provide:

- Design/Build and Engineering Services
- Products for Building Infrastructure
- Utilities and Ventilation
- Plant Assets and Operations



IMPROVING COLD CLIMATE SAFETY & PRODUCTIVITY. WE PROMISE.

DESIGN-BUILD
FACILITY EXPERTS

Automated Facilities / Cold Storage / Food Distribution / Food Processing



When you make the decision to take your business to the next level and need advice on the **design** and **construction** of your food facility, ESI Group will deliver the expertise to get you there.

When our clients succeed, we succeed. That's what we've focused on for the last 30-years and will continue to focus on in the future.

- Facility flow analysis
- Sustainable design
- Quality construction
- On-time delivery

Take control, call (866) 369-3535 today.

SUPPORTING COMPANIES THAT SAFELY FEED THE WORLD.

Booth N-4630



October 23-26, 2022
McCormick Place
Chicago, Illinois USA

(866) 369-3535 / esigroupusa.com / [f](#) [@](#) [in](#) [t](#) [v](#)



FACILITIES+ INFRASTRUCTURE D I R E C T O R Y



October 23-26, 2022
McCormick Place
Chicago, Illinois USA

SEPTEMBER 2022 ■ SPECIAL ISSUE



CONTENTS

SECTION 1

DESIGN/BUILD AND ENGINEERING SERVICES

- | | | | |
|-----------------------------|------------------------|-------------------------|--------------------------|
| 5 The Austin Company | 7 ESI Group USA | 9 Hixson | 11 Tippmann Group |
| EA Bonelli | Food Plant Engineering | Kiewit Industrial Group | Webber/Smith Group |
| Dennis Group | Gleeson Constructors | Matrix Technologies | Zachary Engineering |
| Doral Corp | Hansen-Rice | Stellar | |

SECTION 2

BUILDING INFRASTRUCTURE

- 11** FlowResin/Key Resin Company

SECTION 3

UTILITIES & VENTILATION

- 13** Kaeser Compressors
- Miura America
- Sullair

SECTION 4

PLANT ASSETS AND OPERATIONS

- 13** Busch Vacuum Solutions

- 14** PACK EXPO International Processing Zone Exhibitors and Floor Plan



How do you go from **jam to jars?**



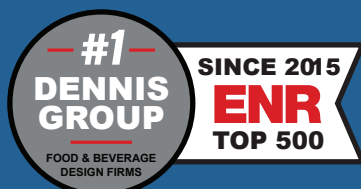
You hire Dennis Group.

Packaging solutions are as varied as the products on a supermarket shelf, and they're always evolving. You need a system integrator who has worked with it all. From baked to frozen/refrigerated, liquid to powder/dried, fresh to shelf-stable – we've handled, filled, and packaged every major category of food over the past 30+ years.

We don't just have packaging engineers. Our in-house team includes everything for turnkey execution: building, process, mechanical, electrical, controls and automation, construction, and CQV. Sanitary design is the foundation of every Dennis Group discipline, so we mitigate food safety risks from the onset.



Booth #7411
Oct 23-26
Chicago, IL



dennisgroup.com
+1.888.514.7270
United States • Canada
Brazil • Portugal

**DENNIS
GROUP**



EB-56, LU-7633

Consult • Design • Engineer • Construct

www.theaustin.com

For over 140 years, companies across the globe have turned to Austin for site selection, design, engineering, construction, and facility maintenance. Whether you are looking to build new, expand existing, or automate production, we have the depth of knowledge to help you make all the right moves.

The Austin Company



LU-7719

Food & Beverage Architectural & Engineering Firm

www.eabonelli.com

E.A. Bonelli is an architectural and engineering firm working exclusively for the food & beverage industries. Over sixty years of hygienic design expertise, serving clients from five offices across the U.S. Since 1960, Designing Buildings That Work.

E.A. Bonelli + Associates, Inc.



**DENNIS
GROUP**

LU-7411

#1 Food and Beverage Design Firm

www.dennisgroup.com

ENR has ranked us the #1 firm in food for the last eight years. With 35 years in the industry, we have a highly experienced team to support you at every stage of a project from small-scale studies to ground-up greenfields, and everything in between.

Dennis Group



DORAL
MILLWRIGHT | RIGGING | FABRICATION

LU-7427

Machinery Installation Contractor

www.doralcorp.net

DORAL Corporation is a 3rd generation Industrial Contractor celebrating over 50 years in business. We travel the U.S. partnering with A/E/C Firms, Integrators and Owners for their Packaging and Processing Equipment Installation needs. Capabilities include Millwright Services, Machinery Moving, Conveyor Installation, Rigging and Erecting, Precision Alignment and Leveling, Dismantling and Relocation Services.

DORAL Corporation, Inc.



HIXSON
ARCHITECTURE ENGINEERING PROCESS

Food & Beverage

Science & Technology

Workplace



KNOWLEDGEABLE | RELIABLE | TRUSTED

Hixson partners with some of the most well-recognized brands in the world on their complex food and beverage, and science + technology projects. With 20 technical disciplines co-located in-house, including building architecture, engineering, and process design, Hixson creates lean, high-quality solutions delivered effectively and with unparalleled speed.

www.hixson-inc.com/FID22 | 513.241.1230 | Info@hixson-inc.com

HIXSON
ARCHITECTURE ENGINEERING PROCESS



N-4630

Design/Build Specialists Supporting Companies That Safely Feed The World

www.esigroupusa.com

A nationwide firm with a sole focus on food and beverage with expertise in temperature-controlled storage, automated facilities, food distribution and specialty food manufacturing and processing facilities including those earning LEED Certification. Our **Single Source Approach** streamlines communication, project timelines and lowers costs. This means clients always get our **Guaranteed Maximum Price**.

ESI GROUP USA



LU-7014

Your Source for Food Plant Design and Construction

www.foodplantengineering.com

We are designers and builders of sustainable food production facilities. Using imagination, innovation, and ingenuity, we help food manufacturing companies improve food safety, gain productivity, and grow capacity.

Food Plant Engineering



LU-7327

Gleeson is your Food Processing, Design/Build Solution

www.gleesonllc.com

Gleeson has a long history of designing and constructing high-quality, Food- Processing Facilities and Cold Storage Distribution Centers, nationwide. Our extensive knowledge of the food industry, makes us the right partner for your design/build project.

Gleeson Constructors & Engineers, L.L.C.



LU-7727

Turn-key Facility Solutions

www.hansen-rice.com

Since 1983, HRI has grown from a regional design-build contractor to an integrated solution provider of design and construction services supporting a broad range of clients nationwide.

HANSEN-RICE, Inc.



CENTRAL VACUUM SYSTEMS

more output
with less input



- Energy savings of up to 70% possible with demand drive control
- High uptime and reliability with stand-by vacuum modules
- Easier and faster maintenance during normal working hours
- Safer working environment with separate equipment room

Let our vacuum pump experts help with your next project. With over 50 years of experience, more than 500 system engineers worldwide, Busch is the leading provider of customized vacuum and pressure systems.



Scan QR Code for more information.

Busch LLC
1-800-USA-PUMP | info@buschusa.com | buschusa.com

**U
BUSCH**
VACUUM SOLUTIONS



LU-7140

Architecture | Engineering | Process Design

www.hixson-inc.com/FID22

Hixson partners with some of the most well-recognized brands in the world on their complex food and beverage, and science + technology projects. With 20 technical disciplines co-located in-house, including building architecture, engineering, and process design, Hixson creates lean, high-quality solutions delivered effectively and with unparalleled speed.

Hixson Architects/Engineers



LU-8962

Engineering Led. Construction Driven. Outcome Certain.

www.kiewit.com

Kiewit is one of North America's largest and most respected engineering and construction organizations. We are prepared to safely support your food and beverage needs throughout all phases of the project lifecycle, from conceptual design, process engineering and constructability integration to project production using design-build execution. Kiewit had 2021 revenues of \$12.1 billion and employs 28,800 staff and craft across North America, including engineers and construction professionals.

Kiewit



LU-8643

Full-Service Engineer, Procure and Construct firm

www.matrixti.com

Matrix Technologies has EPC capability for any engineering or automation need. With a professional team of engineering experts, in-depth process knowledge, and a proven methodology, Matrix consistently delivers superior results on time and on budget.

Matrix Technologies



LU-7605

Your Global Powerhouse in Food Processing

www.stellar.net

Ranked one of the top food manufacturing design-build firms in the world, Stellar offers clients fully integrated services. We have designed and built processing and distribution facilities for world-renowned food industry clients across the US and around the world.

Stellar



WHAT YOU WANT WHEN YOU NEED IT

SITE LOCATION | DESIGN AND ENGINEERING | CONSTRUCTION



For over 140 years, companies across the globe have turned to Austin for site selection, design, engineering, construction, and facility maintenance. Whether you are looking to build new, expand existing, or automate production, we have the depth of knowledge to help you make all the right moves.

theaustin.com



Let's start a conversation about your needs.
Join us at Pack Expo booth #LU-7633.



N-6064

Design/Build for Cold Storage and Food Processing

www.tippmanngroup.com

Tippmann Group offers design/build construction services for temperature-controlled food processing & distribution facilities. The Energy-efficient QFR Zone® blast freezing alternative with Pallet Fit™ doors freezes your palletized product fast.

Tippmann Group



N-4638

Creating Food-Safe Environments

www.webbersmith.com

Providing food-safe, cost-effective, scalable, and sustainable engineering and building design solutions to the Food & Beverage Industry. Our Engineers and Building Designers have been creating comprehensive client-centric solutions since 1978.

The WEBBER/SMITH Group



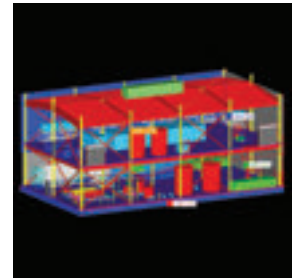
SU-7719

Delivering High-Quality Engineering and Design Services

www.zachrygroup.com/foodandbeverage

Zachry Engineering provides a full range of high-quality engineering and design services from small revamp projects to large grassroot plants for the food and beverage industry in a safe, efficient, and cost-effective manner resulting in successful projects for our clients.

Zachry Engineering Corporation



SECTION 2

BUILDING INFRASTRUCTURE



S-4066

High Performance Flooring and Coatings

www.keyresin.com

We manufacture seamless, heavy-duty polyurethane and epoxy flooring systems for durability in demanding environments. Our Polygiene is an antimicrobial agent, homogeneously distributed throughout Flowfresh flooring that inhibits the growth of bacteria and mold, preventing microorganisms. Our flooring systems offer advantages including slip, chemical and abrasion resistance, and stand up to harsh cleaning processes.

FlowResin/Key Resin Company



RECIPE FOR TROUBLE-FREE AIR

Ingredients

- ❑ **KAESER ROTARY SCREW COMPRESSORS**
for the most reliable, energy-efficient air flow
- ❑ **AIR DRYERS, FILTERS, AND CONDENSATE DRAINS**
to combat moisture, oil, and particles for clean, dry air
- ❑ **SMARTPIPE™ MODULAR ALUMINUM PIPING SYSTEM**
for optimum air quality, flow and leak-free connectors
- ❑ **SIGMA AIR MANAGER 4.0**
for demand-oriented compressed air management

Directions

Scan for a
FREE Consultation



Find us at **PACK EXPO**
Booth #LU-7809



KAESER
COMPRESSORS®

SECTION 3

UTILITIES AND VENTILATION



LU-7809

Air Compressors, Blowers, and Vacuum for the Food and Beverage Industry

www.us.kaeser.com

Beyond supplying the highest in manufacturing quality products, Kaeser excellence extends to evaluating each customer's application and providing the most effective, reliable and energy-efficient compressed air solutions.

Kaeser Compressors



LU-7205

Industrial Steam Boilers

www.miuraboiler.com

Miura's modular boiler installations are a major asset to food companies seeking to maximize operation efficiency and cut energy costs. Whether you're a vegetable processor, poultry plant, or a dairy processor, modular boilers allow greater flexibility for food processing companies to turn boilers on or off as needed, as well as meet steam demand at the greatest efficiency.

MIURA



S-3752

Count on Sullair for Reliable Air Compressors

www.sullair.com

A steady supply of compressed air is critical for your operations. Built for Reliability, Durability and Performance, Sullair air compressors provide ultimate peace of mind, along with access to a global network of Authorized Distributors.

Sullair A Hitachi Group Company



SECTION 4

PLANT ASSETS AND OPERATIONS



N-5923

Reliable Vacuum Solutions Maximize Productivity

www.buschusa.com

For over 50 years, Busch has provided reliable vacuum pumps, blowers, systems, and services uniquely adapted for each application. With increasing process demands, our innovative solutions help increase efficiency, avoid downtime, and decrease energy costs.

Busch Vacuum Solutions





PACK EXPO International Process Zone Exhibitors*

Advertisers in this issue are highlighted in blue.

A

A&B Process Systems, LU-7118
Admix, LU-7352
AerosUSA, LU-7565
Afinomaq, LU-7358
AGC Heat Transfer, LU-7300
Air and Water Systems, LU-7032
Alfa Laval, LU-7647
Alkon, LU-7054
Allenair, LU-7054
Atlas Copco, LU-7239
AutoCoding Systems, LU-7118
Axiflow Technologies, LU-7518

B

Bandall America, LU-7141
Barnum Mechanical, LU-7439
Begert Stainless, LU-7039
Belden, LU-7058
Blentech, LU-7146
Bodycote S&P, LU-7065
Bramidan US, LU-7558
Burkert Fluid Control Systems, LU-7728

C

Cabinplant, LU-7559
Cablevey Conveyors, LU-7703
CFT Group, LU-7325

Clean Water Technology, LU-7025

CM Process Solutions, LU-7254

CMP Charlottetown Metal Products, LU-7349

Codi Manufacturing, LU-7721
Commercial Manufacturing, LU-7603
Coperion & Coperion K-Tron, LU-7756
CPM Wolverine Proctor, LU-7442

D

D&D Electronics, LU-7635
D&F Equipment Sales, LU-7207
DCI, LU-7403

Dennis Group, LU-7411

Deville Technologies, LU-7332
Dixon Sanitary, LU-7539

Doral, LU-7427

Douglas Machines, LU-7314

E

EA Bonelli + Associates, LU-7719

Eagle Product Inspection, LU-7149
Eirich Machines, LU-7503
Ensign Solutions, LU-7747
Epstein, LU-7038
Expanite, LU-7562
Extrutech Plastics, LU-7018

F

FAM Stumabo USA, LU-7332
FBF North America, LU-7466
FBR Elpo, LU-7110
Feldmeier Equipment, LU-7252
Fenner Precision Polymers, LU-7020
Finna Sensors, LU-7858
Flottweg Separation Technology, LU-7041

Food Plant Engineering, LU-7014

Food Processing Magazine, LU-7030
FoodSafe Drains, LU-7003
FoodTools Consolidated, LU-7026

FPS Food Process Solutions, LU-7349

Fristam Pumps USA, LU-7303

G

G & F Manufacturing, LU-7144
G.J. Olney, LU-7312
Galdi, LU-7361
Gates TPU, LU-7735

Gleeson Constructors & Engineers, LU-7327

H

Haaga Sweepers/Bissell BigGreen Commercial, LU-7640
Handtmann, LU-7305
Hansen-Rice, LU-7727
Hapco, LU-7752
Hardy Process Solutions, LU-7108
Haskell, LU-7664
Haug Quality Equipment, LU-7437
Haynes Lubricants, LU-7436
High Tek USA, LU-7258

The Processing Zone Floor Plan



Hiperbaric, LU-7341

Hixson Architecture, Engineering & Process, LU-7140

Holloway America, LU-7541
Honle UV America, LU-7543
HRS Heat Exchangers, LU-7535

I
icotek, LU-7056
I-Mak Reduktor Variyator, LU-7666
Inficon, LU-7550
Infini-Mix Process Solutions, LU-7355
Interroll USA, LU-7743
Interthor, LU-7555

J
JBT, LU-7118
Jeros, LU-7556
JIE USA, LU-7512
Jorgensen Engineering, LU-7557

K
Kagetec Industrial Flooring, LU-7013
KMT Waterjet Systems, LU-7643
KPM Analytics, LU-7740

L
Leancure, LU-7060
Lee Industries, LU-7730
LineSpex, LU-7045
Loehrke-Process Hygiene, LU-7738
Lorenz Conveying Products, LU-7359
Lutze, LU-7028
Lyco Manufacturing, LU-7318

M
Machinery & Equipment, LU-7420
Magnuson, LU-7009

Marchant Schmidt, LU-7203

Marel, LU-7523

Matcon Americas, LU-7340
Material Transfer & Storage, LU-7362
Membrane Process and Control, LU-7160
Mepaco, LU-7712
MGT Industries, LU-7264
Midwestern Industries, LU-7023

Miura America, LU-7205

MoistTech, LU-7435
Morcos Egyptian Engineering, LU-7262
Multisorb Technologies, LU-7364
MXD Process, LU-7166

N
NDC Technologies, LU-7061
Nichimo International, LU-7520
North Star Engineered Products, LU-7158

O
OctoFrost, LU-7048
OGI Process Equipment, LU-7440
Optimum Sorting, LU-7241

P
Palmer Beverage Systems, LU-7366
ParityFactory, LU-7012
Pentair, LU-7161
Perfex, LU-7765
Politech-Plus, LU-7066
Preferred Stainless Holdings, LU-7162
Prime Engineering, LU-7062
Probat, LU-7533
Pro-face by Schneider Electric, LU-7243
ProLeiT, LU-7530
Proseal America, LU-7118
ProXES, LU-7513

Quantum Technical Services, LU-7709

Quickkraft, LU-7546
Quintus Technologies, LU-7336

R
RathGibson, LU-7036
Raytec Vision, LU-7344
Rechner Electronics Industries, LU-7335
Reyco Systems/Idaho Steel Products, LU-7630
RGF Environmental Group, LU-7147
Rocket Machine Works, LU-7753
Rome Grinding Solutions, LU-7027
Rotex Global, LU-7537
Russell Finex, LU-7417

S
SafetyChain Software, LU-7749
Sanitech, LU-7001
Satake USA, LU-7621
Scan American, LU-7552
Schenck Process, LU-7247
Schneider Electric, LU-7245
Scott Turbon Mixer, LU-7462
SD Freeze Drying, LU-7563
Semi-Bulk Systems, LU-7152
Sevvalusa Nut Roasting Systems, LU-7423
Sheffield Machine Knife, LU-7050
Sigma Equipment, LU-7321
Ska Fabricating, LU-7657
Soco System, LU-7561
Sormac, LU-7266

Spokane Industries, LU-7043

Stainless Motors, LU-7649
Stellar, LU-7605
Summitville Tiles, LU-7545
Superflash Compressed Gas Equipment, LU-7156
Sweco, LU-7705

T
Tecnopool, LU-7708
Tentoma, LU-7564

The Austin Company, LU-7633

The Confederation of Danish Industry, LU-7560
Thermaline, LU-7662
TM Process & Controls, LU-7718
Tomra Food, LU-7135
Turello, LU-7109

U
Uhde High Pressure Technologies, LU-7636
Unibloc Hygienic Technologies, LU-7529
Unifiller Systems, LU-7464
Unitech Washing Systems, LU-7153

Urschel Laboratories, LU-7112

V
Vega Americas, LU-7443
Vincent, LU-7505
VJ X-Ray, LU-7540
VNE, LU-7741
Voss Belting & Specialty, LU-7064
VR Food Equipment, LU-7544

W
Wangen America, LU-7548
Watson-Marlow Fluid Technology Solutions, LU-7164
Wayland Industries, LU-7457

Weber, LU-7506

Weidmüller, USA, LU-7732
Wire Belt Company of America, LU-7421
Worximity Technology, LU-7367
WRH Industries, LU-7758

Z
Zeppelin Systems USA, LU-7037

*Exhibitors as of press time.

For a complete list of all PACK EXPO International exhibitors, please visit www.packexpointernational.com.

7732	7730	7728	7727	7721	7719	7718
------	------	------	------	------	------	------

7712	7709	7708	7705	7703
------	------	------	------	------

7633	7630	7523	7621
7533	7530	7529	7520
			7518

7513	7512	7506	7505	7503
------	------	------	------	------

7427	7423	7421	7420	7417
7332	7327	7325	7321	7318

7411	7403
7314	7312
7305	7303

7300

Processing Innovation Stage	7130	7118
-----------------------------	------	------

7207	7205	7203
7112	7110	7109
	7108	

7032	7031	7030	7028	7027	7026	7025	7023	7020	7018
------	------	------	------	------	------	------	------	------	------

7014	7013	7012	7009	7003	7001
------	------	------	------	------	------



Creating **FOOD-SAFE ENVIRONMENTS**



Come see us at PACK
EXPO International
Booth #N-4638

Our Core Markets

Food Processing

- Prepared Foods/Produce
- Dairy
- Meat/Poultry/Eggs/Seafood
- Confectionery
- Bakery/Snacks
- Pet Food
- Ingredients
- Beverage

Distribution

- Grocery Distribution
- Food Service Distribution
- Convenience Store Distribution
- Public Cold Storage

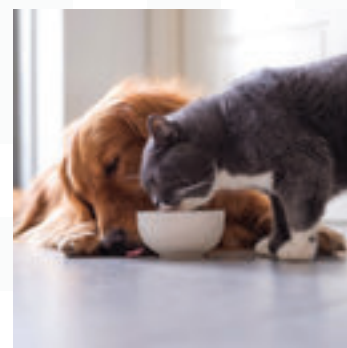
Other

- Pharmaceutical
- General Industrial

Our Services

- Food Safety Consulting
- Building & Site Evaluations
- Facility Planning
- Building Design
- Low Temp Design
- Structural Engineering
- Mechanical Engineering
- Electrical Engineering
- Plumbing Design
- Refrigeration Design
- PSM & RMP Compliance
- Process & Packaging Systems Design
- Material Handling Optimization
- Forensic/Expert Witness

Learn more at
webbersmith.com



WEBBER/SMITH
The **Group**®

Engineers & Designers Creating
Comprehensive Solutions®

20 Wright Avenue, Lititz, PA 17543

WEBBER/SMITH Associates, Inc.

717.625.4140

AE Design, Inc.

717.625.4141

EA Design Concepts, Inc.

717.625.4142

TRADEMARK NOTICE: The WEBBER/SMITH Group® is a registered trademark used under license.

LICENSING NOTICE: Professional licensure and firm authorization are State specific. WEBBER/SMITH Associates, Inc., AE Design, Inc., EA Design Concepts, Inc. and the individual only offer and provide Engineering and/or Architectural services in those States in which they are authorized.