

CO-LOCATED



Healthcare+  
PACKAGING  
EXPO

LAS VEGAS

September 27-29, 2021  
Las Vegas Convention Center

# FACILITIES & INFRASTRUCTURE DIRECTORY

A new resource highlighting suppliers who provide

- Design/build and engineering services
- Products for building infrastructure
- Plant utilities, plant safety, material handling



## DESIGN/BUILD & ENGINEERING SERVICES

- |   |                        |   |                     |
|---|------------------------|---|---------------------|
| 3 | The Austin Company     | 5 | Kiewit              |
| 3 | Doral Corp             | 5 | Stellar             |
| 3 | ESI Group USA          | 7 | Tippmann Group      |
| 3 | Food Plant Engineering | 7 | Webber/Smith Group  |
| 5 | Gleson Constructors    | 7 | Zachary Engineering |
| 5 | Hansen-Rice, Inc.      |   |                     |

## BUILDING INFRASTRUCTURE

- |   |                             |   |      |
|---|-----------------------------|---|------|
| 7 | Flowcrete/Key Resin Company | 8 | Sika |
|---|-----------------------------|---|------|

## UTILITIES & VENTILATION

- |   |                          |   |         |
|---|--------------------------|---|---------|
| 8 | Kaeser Compressors, Inc. | 8 | Sullair |
| 8 | Miura America Co., Ltd.  |   |         |



September 27–29, 2021  
Las Vegas Convention Center  
Las Vegas, Nevada USA

SEE US AT BOOTH # 7130

# A SINGLE-SOURCE APPROACH TO FRESH SOLUTIONS

Since our inception 30 years ago, ESI Group has been supporting companies that safely feed the world. We want to improve the way you work today and meet the demands of tomorrow. Our experienced staff of over 70 professionals have completed 425+ projects for industry leaders like The Bama Companies, Ben E. Keith Foods, Cargill, Kerry, Land O’Frost, Sysco and US Foods. When you make the decision to take your business to the next level and need advice on the design and construction of your food facility, ESI Group USA can deliver the expertise to get you there.



## DESIGN SERVICES

ESI’s design services can be performed independently, or combined for a single-source, design-build approach.

## CONSTRUCTION

ESI’s construction division practices combined responsibility for design, budgeting, and construction into one firm.

## SUSTAINABILITY

ESI pursues new technology and techniques to improve building performance in a cost efficient and sustainable way.

FIND OUT MORE AT [ESIGROUPUSA.COM/SERVICES](https://esigroupusa.com/services)     

950 Walnut Ridge Drive, Hartland, WI 53029 | 866-369-3535 | [sales@esigroupusa.com](mailto:sales@esigroupusa.com)





THE AUSTIN COMPANY

BOOTH SU-7946

### Consult • Design • Engineer • Construct

[www.theaustin.com](http://www.theaustin.com)

For over 140 years, companies across the globe have turned to Austin for site selection, design, engineering, construction, and facility maintenance. Whether you are looking to build new, expand existing, or automate production, we have the depth of knowledge to help you make all the right moves.

**The Austin Company**



BOOTH SU-7315

### Machinery Installation Contractor

[www.doralcorp.net](http://www.doralcorp.net)

DORAL Corporation is a 3rd generation Industrial Contractor celebrating over 50 years in business. We travel the U.S. partnering with A/E/C Firms, Integrators and Owners for their Packaging and Processing Equipment Installation needs. Capabilities include Millwright Services, Machinery Moving, Rigging and Erecting, Precision Alignment and Leveling, Dismantling and Relocation Services.

**DORAL Corporation, Inc.**



BOOTH SU-7130

### Design/Build Specialists Supporting Companies That Safely Feed The World

[www.esigroupusa.com](http://www.esigroupusa.com)

A nationwide firm with a sole focus on food and beverage with expertise in temperature-controlled storage, automated facilities, food distribution and specialty food manufacturing and processing facilities including those earning LEED Certification. Our **Single Source Approach** streamlines communication, project timelines and lowers costs. This means clients always get our **Guaranteed Maximum Price**.

**ESI GROUP USA**



BOOTH N-26001

### Your Source for Food Plant Design and Construction

[www.foodplantengineering.com](http://www.foodplantengineering.com)

We are designers and builders of sustainable food production facilities. Using imagination, innovation, and ingenuity, we help food manufacturing companies improve food safety, gain productivity, and grow capacity.

**Food Plant Engineering**



WE ARE DESIGNERS AND  
BUILDERS OF

# SUSTAINABLE FOOD PRODUCTION FACILITIES

THAT FEED THE WORLD  
TODAY AND TOMORROW

## PLAN

Planning for growth requires insight into the future. Our consulting services provide a roadmap for site selection, process improvement planning, facility renovation, expansion, and new construction concepts.

## DESIGN

Creating a food facility that is functional today and adaptable to the future requires foresight. Our design services generate process designs, engineering and architectural concepts, plans and specifications for building a food facility that will stand the test of time.

## BUILD

Building a food plant requires construction techniques that yield an environment safe for food today as well as for tomorrow. Our construction services utilize professional management oversight to transform sanitary designs into a hygienic facility.



**FOOD PLANT  
ENGINEERING**

PLAN | DESIGN | BUILD

foodplantengineering.com  
LLC 513-488-8888



BOOTH N-19002

### Gleeson is your Food Processing, Design/Build Solution

[www.gleesonllc.com](http://www.gleesonllc.com)

Gleeson has a long history of designing and constructing high-quality, Food- Processing Facilities and Cold Storage Distribution Centers, nationwide. Our extensive knowledge of the food industry, makes us the right partner for your design/build project.

**Gleeson Constructors & Engineers, L.L.C.**



BOOTH N-20008

### Turn-key facility solutions

<https://www.hansen-rice.com>

Engage early using HRI's Progressive Design-Build contracting approach. Our content experts provide custom Project Development Plans to optimize business needs. This allows Owners to evaluate risk and funding required to deliver a successful project.

**Hansen-Rice, Inc.**



BOOTH SU-7636

### Construction Focused. Outcome Certain.

[www.kiewit.com](http://www.kiewit.com)

Kiewit is one of North America's largest and most respected engineering and construction organizations. Whether your food and beverage project is a traditional bid-build, design-build or requires early contractor involvement to influence design, delivering safe and high-quality projects is the foundation of Kiewit's business and success. Kiewit had 2020 revenues of \$12.5 billion and employs 27,000 staff and craft employees.

**Kiewit**



BOOTH SU-7839

### Your Global Powerhouse in Food Processing

[www.stellar.net](http://www.stellar.net)

Ranked one of the top food manufacturing design-build firms in the world, Stellar offers clients fully integrated services. We have designed and built processing and distribution facilities for world-renowned food industry clients across the US and around the world.

**Stellar**



CONSULT · DESIGN · ENGINEER · CONSTRUCT



**START WITH US, STAY WITH US.**



**THE AUSTIN COMPANY**

[www.theaustin.com](http://www.theaustin.com)

For over 140 years, companies across the globe have turned to Austin for site selection, design, engineering, construction, and facility maintenance. So whether you are looking to build new, expand existing, or automate production, we have the depth of knowledge to help you make all the right moves.



## SECTION 1

## Design/Build & Engineering Services



### Design/Build for Cold Storage and Food Processing

[www.tippmanngroup.com](http://www.tippmanngroup.com)

Tippmann Group offers design/build construction services for temperature-controlled food processing & distribution facilities. The Energy-efficient QFR Zone® blast freezing alternative with Pallet Fit™ doors freezes your palletized product fast.

**Tippmann Group**

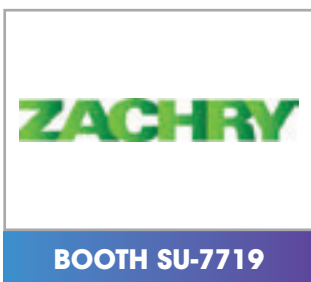


### Creating Food-Safe Environments

[www.webbersmith.com](http://www.webbersmith.com)

Providing food-safe, cost-effective, scalable, and sustainable engineering and building design solutions to the Food & Beverage Industry. Our Engineers and Building Designers have been creating comprehensive client-centric solutions since 1978.

**The WEBBER/SMITH Group**

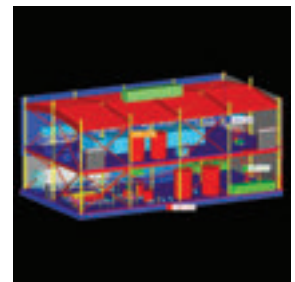


### Delivering High-Quality Engineering and Design Services

[www.zachrygroup.com/foodandbeverage](http://www.zachrygroup.com/foodandbeverage)

Zachry Engineering provides a full range of high-quality engineering and design services from small revamp projects to large grassroots plants for the food and beverage industry in a safe, efficient, and cost-effective manner resulting in successful projects for our clients.

**Zachry Engineering Corporation**



## SECTION 2

## Building Infrastructure

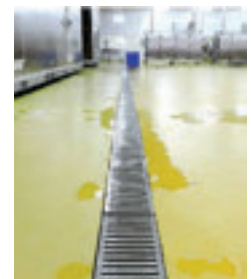


### High Performance Flooring and Coatings

[www.keyresin.com](http://www.keyresin.com)

Manufacturing seamless, heavy-duty polyurethane and epoxy flooring systems that offer long term durability in demanding environments. Flowcrete Polygiene is an antimicrobial agent, homogeneously distributed throughout Flowfresh flooring that inhibits the growth of bacteria and mold, preventing microorganisms. Our range of seamless flooring systems offer advantages including slip, chemical and abrasion resistance, and the ability to stand up to harsh cleaning processes.

**Flowcrete/Key Resin Company**



## SECTION 2

## Building Infrastructure



BOOTH N-8917

### Turn "Down Time" into "No Time"

[www.sikafloorusa.com](http://www.sikafloorusa.com)

Complete epoxy mortar installations in record time with new Sikafloor PurCem Fast Set flooring systems. Sika has developed a rapid return to service PurCem range that dramatically reduces recoat and cure times without affecting pot life and product workability.

**Sikafloor PurCem Fast Set**



## SECTION 3

## Utilities & Ventilation



[info.usa@kaeser.com](mailto:info.usa@kaeser.com)

### Optimizing compressed air in the food and beverage industry

[us.kaeser.com/pfw](http://us.kaeser.com/pfw)

Compressed air and vacuum are critical to the food and beverage industries. Kaeser offers a wide range of systems designed for ease of maintenance, deliver ultra-low noise levels, and are consistently more efficient than the competition.

**Kaeser Compressors, Inc.**



BOOTH N-25023

### Industrial Steam Boilers

[www.miuraboiler.com](http://www.miuraboiler.com)

Miura's modular boiler installations are a major asset to food companies seeking to maximize operation efficiency and cut energy costs. Whether you're a vegetable processor, poultry plant, or a dairy processor, modular boilers allow greater flexibility for food processing companies to turn boilers on or off as needed, as well as meet steam demand at the greatest efficiency.

**MIURA**



BOOTH N-9812

### Count on Sullair for Reliable Air Compressors

[www.sullair.com](http://www.sullair.com)

A steady supply of compressed air is critical for your operations. Built for Reliability, Durability and Performance, Sullair air compressors provide ultimate peace of mind, along with access to a global network of Authorized Distributors.

**Sullair, A Hitachi Group Company**







C O - L O C A T E D



LAS VEGAS

Healthcare<sup>+</sup>  
PACKAGING  
EXPO

# GET READY TO **EXPERIENCE INNOVATION**

Attend the one event that has it all! **PACK EXPO Las Vegas** and co-located **Healthcare Packaging EXPO** will be the most comprehensive packaging and processing event this year.

**NOTHING COMPARES TO LIVE, FACE-TO-FACE CONNECTIONS!**

Be there and get your all-access pass to:

- › New technology and full-scale machinery
- › Sustainable solutions and materials
- › Crossover applications from 40+ vertical markets
- › 70+ FREE educational sessions
- › Invaluable in-person networking



Learn about our health and safety commitment by visiting:  
[packexpolasvegas.com/packready](http://packexpolasvegas.com/packready)

REGISTER NOW FOR THE  
**\$30 EARLY BIRD RATE!**



Produced by:



# LEADERS IN PROCESSING 2021

Each of the following market leading companies participates in *ProFood World's* Leaders in Processing program. Leaders in Processing companies receive prominent, year-round exposure on ProFoodWorld.com. *ProFood World* sincerely thanks its participants!



More Information: [www.profoodworld.com](http://www.profoodworld.com)



## Kaeser Compressors can help food

and beverage manufacturers of all sizes increase uptime, save in operating expenses, and lower life-cycle costs.

Compressed air and vacuum are vital in nearly all aspects of food and beverage manufacturing. Steady pressure and clean, dry air are critical for all sorts of machinery including primary processing equipment, mechanical conveyors, packaging equipment, printing and labelling, palletizers and de-palletizers, and air-driven hand tools. Vacuum is often used in packaging and low pressure air in pneumatic conveying and wastewater treatment. Plant operators need to keep these lines working smoothly and efficiently, often with the additional challenge of meeting strict food safety standards.

Yet, despite their importance, air systems are often poorly managed. Oversizing and lack of controls waste power. Inconsistent pressure and flow reduce productivity with scrap and downtime. And between leaks, improper uses, and artificial demand, nearly half the air produced is wasted.

Kaeser understands these challenges and has helped countless food and beverage manufacturers improve existing air systems to increase product quality and minimize downtime. Our team of experts can design the most energy-efficient, reliable, low maintenance system for your application. If you're tired of downtime, frequent maintenance, and rising energy costs, visit us online at [us.kaeser.com/pfw](https://us.kaeser.com/pfw).



**Visit us online at [us.kaeser.com/pfw](https://us.kaeser.com/pfw)**

**Kaeser Compressors, Inc. • (866) 516-6888 • [us.kaeser.com/pfw](https://us.kaeser.com/pfw)**

The Kaeser logo is a registered trademark of Kaeser Kompressoren ©2021 Kaeser Compressors, Inc. [customer.us@kaeser.com](mailto:customer.us@kaeser.com)



# Creating **FOOD-SAFE ENVIRONMENTS**



Healthcare  
**EXPO**

September 27-29, 2021 • Las Vegas Convention Center  
Las Vegas, Nevada USA

Come see us at  
**PACK EXPO Las Vegas**  
Booth #C-5606

## Our Core Markets

### Food Processing

- Prepared Foods/Produce
- Dairy
- Meat/Poultry/Eggs/Seafood
- Confectionery
- Bakery/Snacks
- Pet Food
- Ingredients
- Beverage

### Distribution

- Grocery Distribution
- Food Service Distribution
- Convenience Store Distribution
- Public Cold Storage

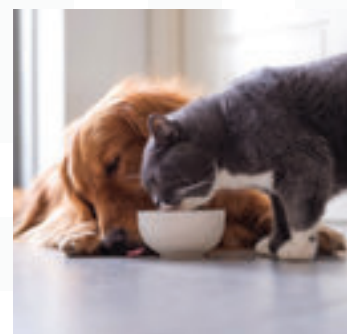
### Other

- Pharmaceutical
- General Industrial

## Our Services

- Food Safety Consulting
- Building & Site Evaluations
- Facility Planning
- Building Design
- Low Temp Design
- Structural Engineering
- Mechanical Engineering
- Electrical Engineering
- Plumbing Design
- Refrigeration Design
- PSM & RMP Compliance
- Process & Packaging Systems Design
- Material Handling Optimization
- Forensic/Expert Witness

Learn more at  
[webbersmith.com](http://webbersmith.com)



**WEBBER/SMITH**  
The **Group**®

Engineers & Designers Creating  
Comprehensive Solutions®

20 Wright Avenue, Lititz, PA 17543

**WEBBER/SMITH Associates, Inc.**

717.625.4140

**AE Design, Inc.**

717.625.4141

**EA Design Concepts, Inc.**

717.625.4142

**TRADEMARK NOTICE:** The WEBBER/SMITH Group® is a registered trademark used under license.

**LICENSING NOTICE:** Professional licensure and firm authorization are State specific. WEBBER/SMITH Associates, Inc., AE Design, Inc., EA Design Concepts, Inc. and the individual only offer and provide Engineering and/or Architectural services in those States in which they are authorized.