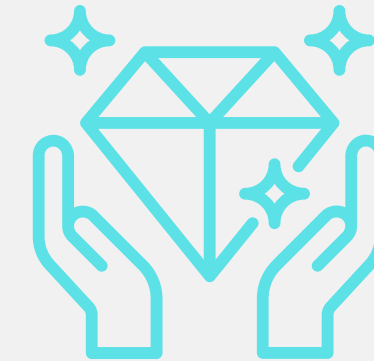


Leaders Programs

VALUE PROP

Be a leader in your category(s). Maximize your message and reach buyers actively researching your solutions in the most valuable year-round multi-channel media program available.



KEY BENEFITS

- Brand awareness
- Multiple channels
- Year-round exposure
- Contextually-triggered online article listings by product category



TARGET ADVERTISER

- Those who want to multi-channel reach to the entire Packaging World audience
- Those who want to create more awareness around their brand

